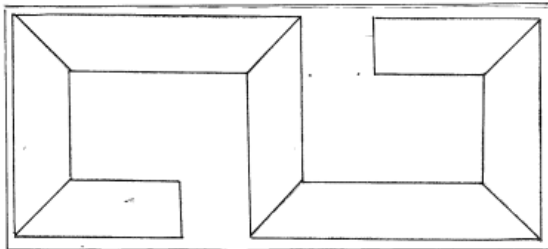


Wëhepei « mamaktelele » milikut itöppëk

J'apprends à dessiner le motif de la « perdrix mamaktelele »

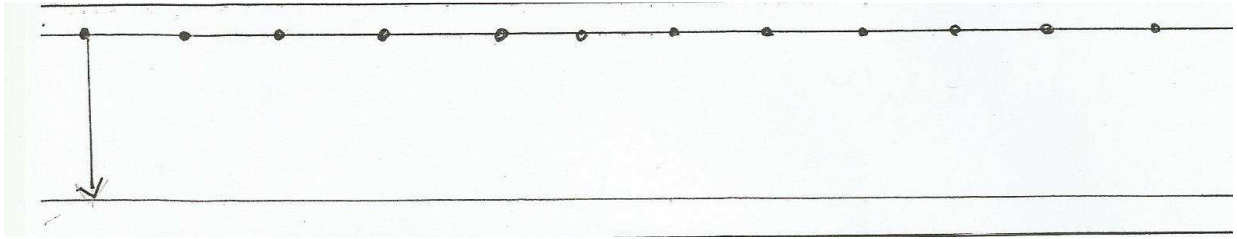
MS/GS n°1

1. Tikë wipkatpë kawëinë lomona (*faire des traits verticaux de haut en bas*)
2. Tikë wipkatpë kawëinë lomona moloinë tikë wipkatpë hapëman (*faire des traits verticaux de haut en bas puis ensuite des traits horizontaux*)
3. Tikë wipkatpë kawëinë lomona (*faire des traits verticaux de haut en bas*)
4. Tikë pilëutom itëtöppëk (*suivre les flèches*)
5. Tikë pilëutom itëtöppëk (*suivre les flèches*)
6. Tikë pilëutom itëtöppëk (*suivre les flèches*)
7. Tikë leitpöpëk (*reproduire le modèle*)

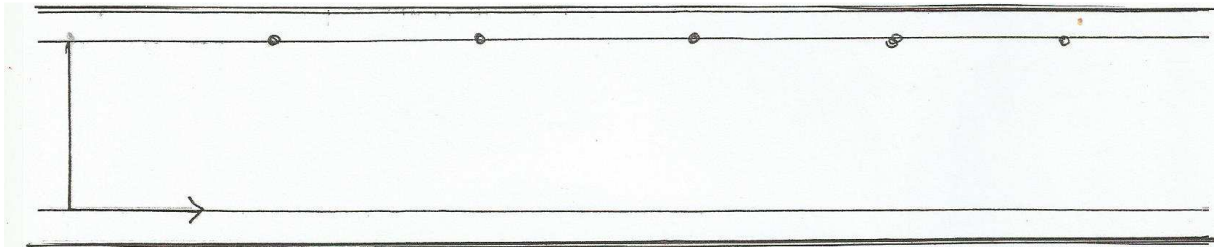


ILUPI Denkel : intervenant en wayana (Ecole d'Elahé)
RUIZ Corinne : Conseillère pédagogique arts visuels
MAUREL Didier : Cons. pédag. langues amérindiennes

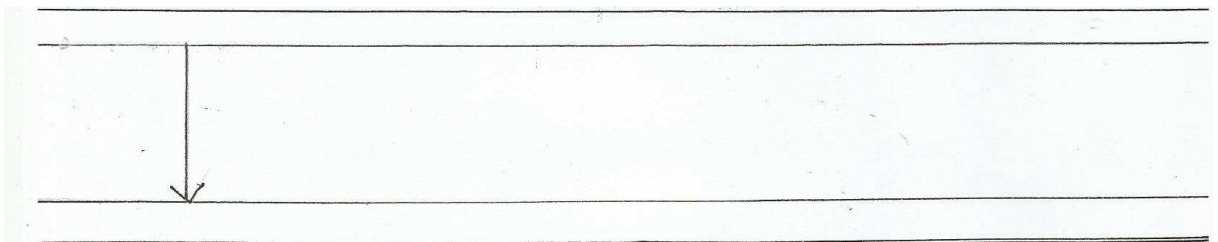
Tikë wipkatpë kawëinë lomona



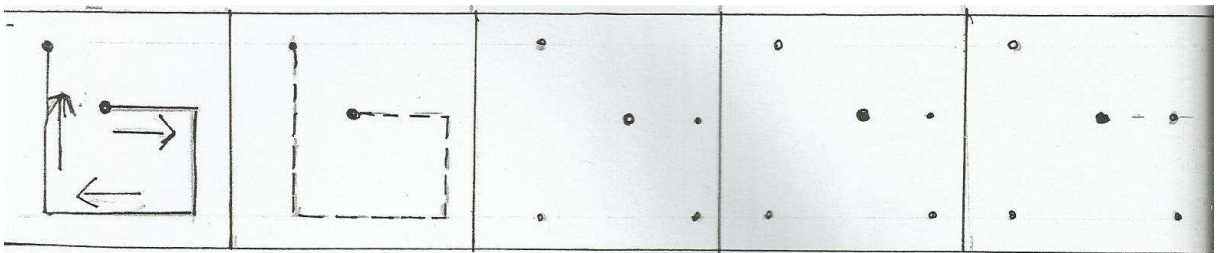
Tikë wipkatpë kawëinë lomona moloinë tikë wipkatpë hapëman



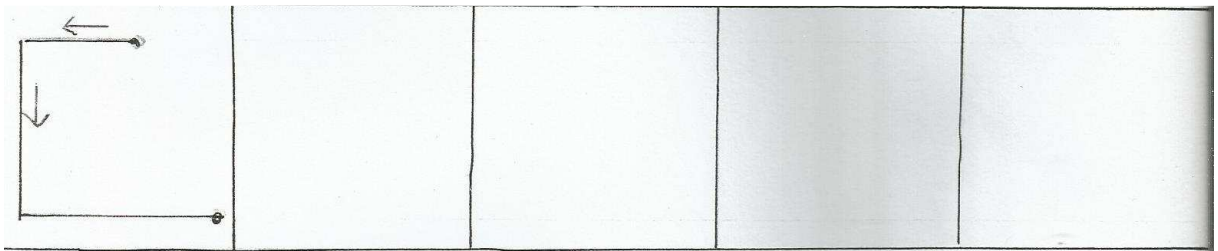
Tikë wipkatpë kawëinë lomona



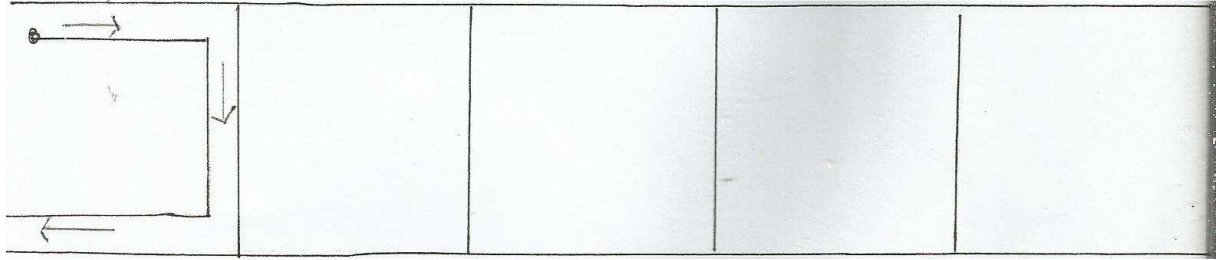
Tikë pilëutom itëtoppëk



Tikë pilëutom itëtoppëk



Tikë pilëutom itëtoppëk



Tikë leitpîpëk

