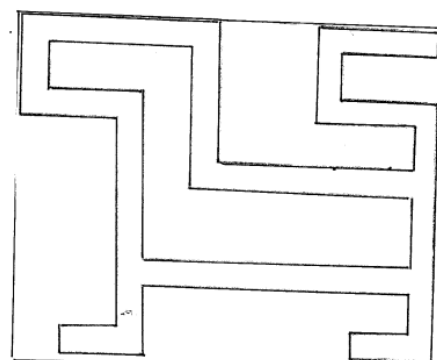
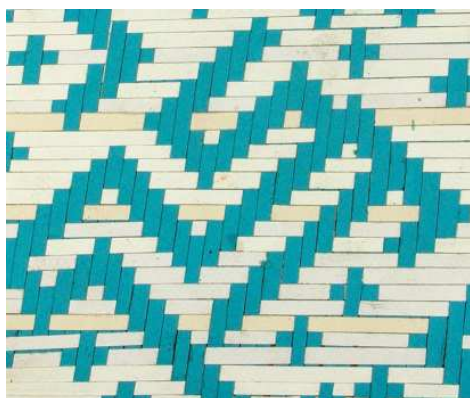


**Wëhepei « meli » milikut itoppëk**  
J'apprends à dessiner le motif de « l'écureuil »

**GS n°5**

1. Tikë wipkatpë kawëinë lomona (*faire des traits de haut en bas*)
2. Tikë wipkatpë hapëman (*faire des traits horizontaux*)
3. Tikë pïlëutom ïlitpëpëk (*suivre les flèches*)
4. Tikë leitpïpëk (*Reproduire le modèle*)
5. Tikë leitpïpëk (*Reproduire le modèle*)
6. Tikë leitpïpëk (*Reproduire le modèle*)

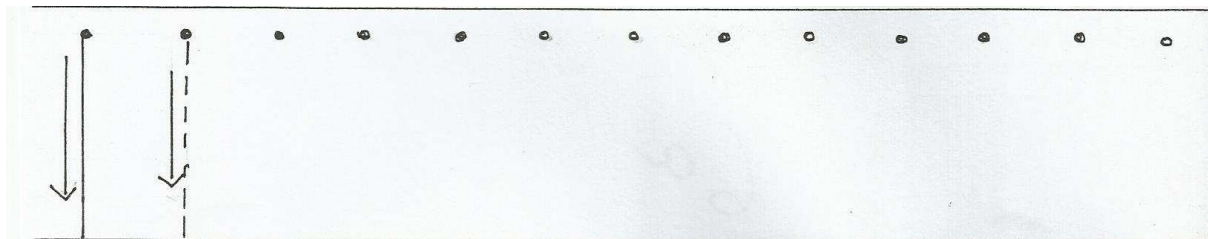


**OPOYA Akama : intervenant en wayana (Ecole de Taluhwen)**

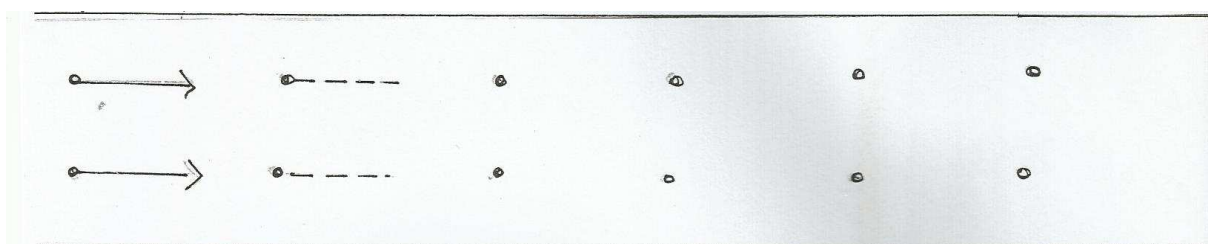
RUIZ Corinne : conseillère pédagogique - arts visuels

MAUREL Didier : conseiller pédagogique - langues amérindiennes

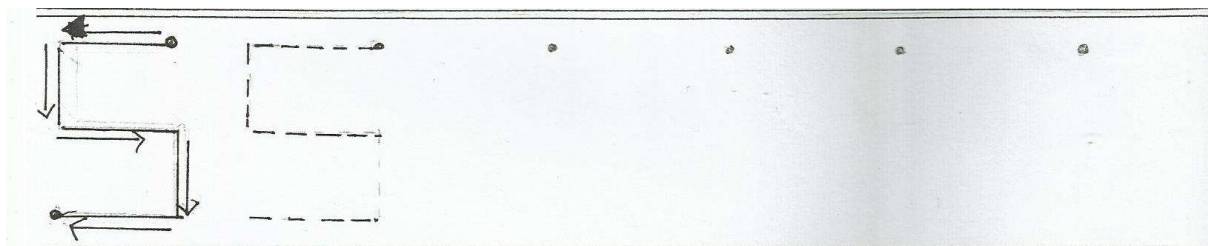
Tikë wipkatpë kawëinë lomona



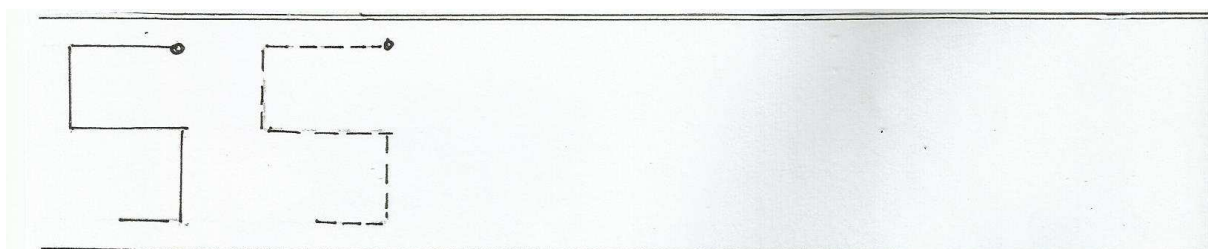
Tikë wipkatpë hapëman



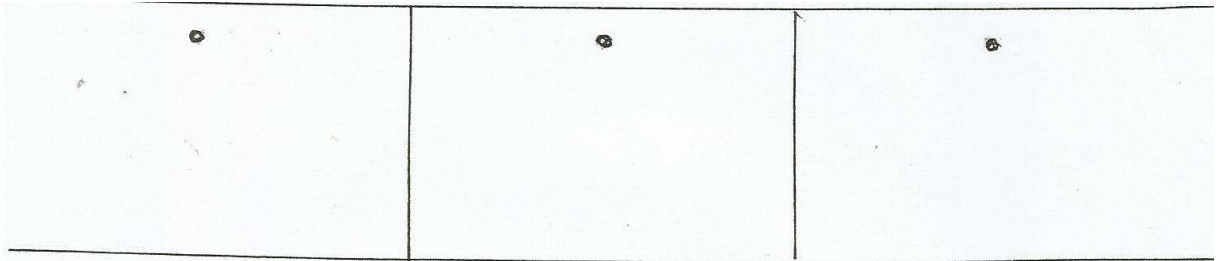
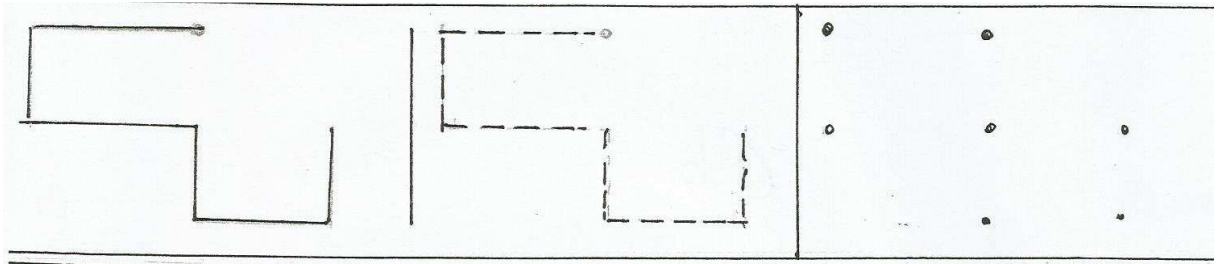
Tikë pilëutom ilitpëpëk



Tikë leitpëpëk



Tikë leitpöpök



Tikë leitpöpök

