

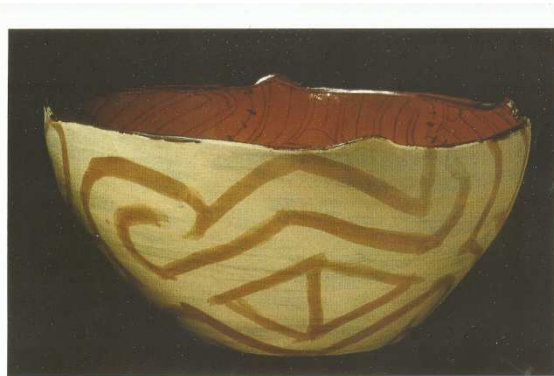
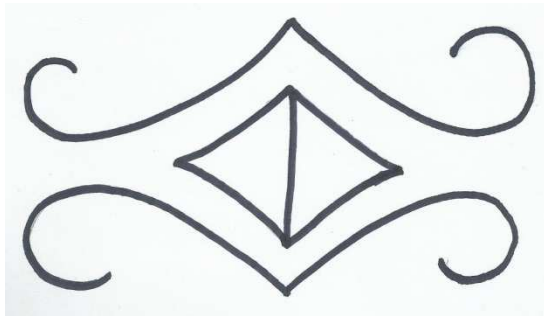
Womepaekali'naainapolikapilipoko« **kamalaka
uetasipotili, yukuemulumalo**»

*J'apprends à dessiner le motif kali'na
de« l'abdomen de la fourmi yuku »*

consignes

MS/GS n°6

- 1 Tikowaiye enepop owala ika'ko (Fais des arabesques comme le modèle)
- 2 Tikowaiye enepopo wala ika'ko (Fais des arabesques comme le modèle)
- 3 Poponaka ika'ko piliwa wala (Fais un trait vertical)
- 4 Ainapoli ika'ko (Dessine le motif)
- 5 Ainapoli ikapimako (Termine le motif)

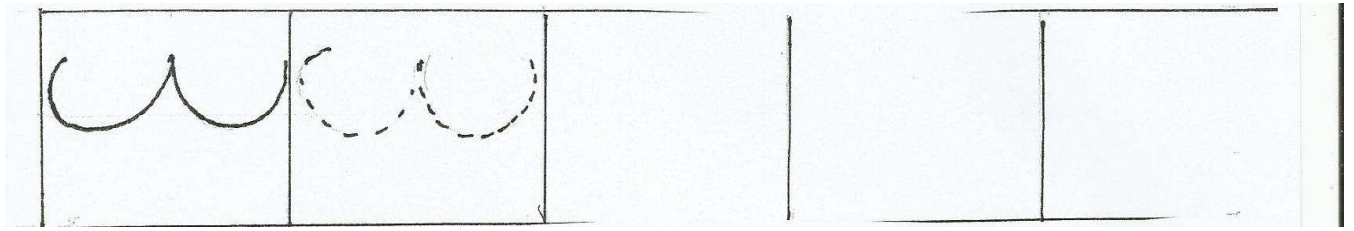


JEAN-JACQUES Wellya : intervenante en kali'na
(Ecole Yukaluwan - Iracoubo)

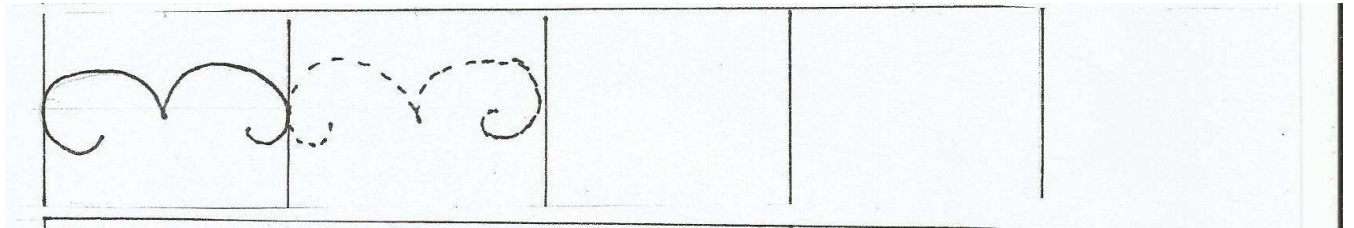
RUIZ Corinne : conseillère pédagogique - arts visuels

MAUREL Didier : conseiller pédagogique - langues amérindiennes

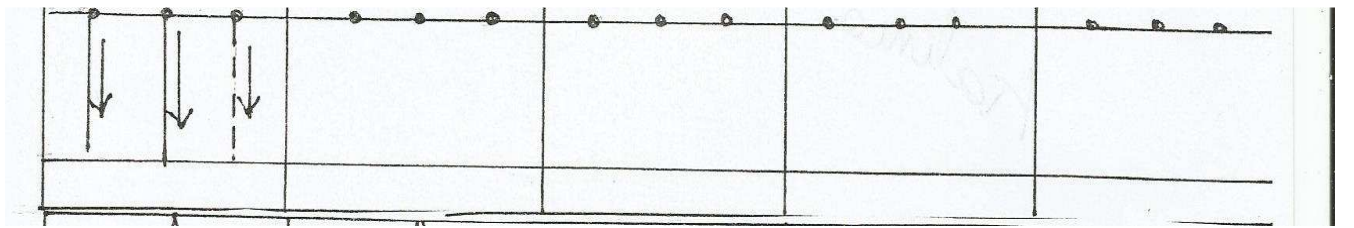
Tikowaiye enepopo wala ika'ko



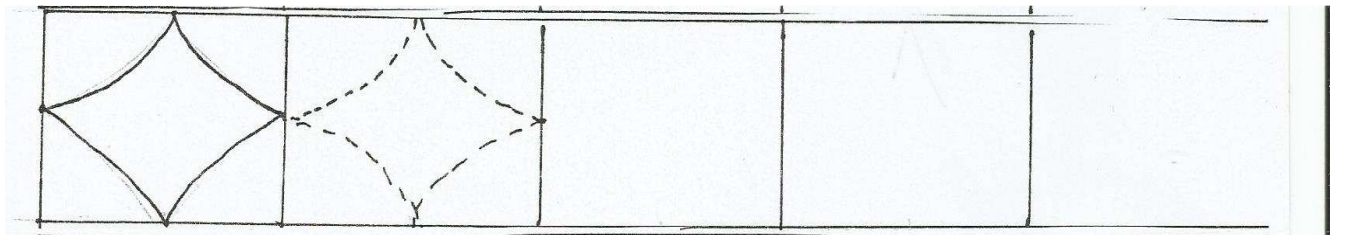
Tikowaiye enepopo wala ika'ko



Poponaka ika'ko piliwa wala



Ainapoli ika'ko



Ainapoli ikapimako

