

Olukomenpo topu
 tupo
 konotumenposan.
 Olukomenpo
 kunuwano.
 Topu topu topu
 tupo.

Tukutimi 10

Nukutuli man
 tupo - topu
 olukomenpo

u U u U



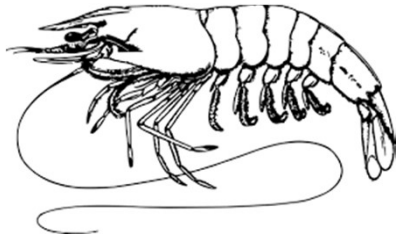
kulukulu kulukulu



Tikami : Elokon ukusan umenko, [u] etali yako o'wa.



Tikami : Elokon ukusan ta itakako oye [u] etali yako o'wa.

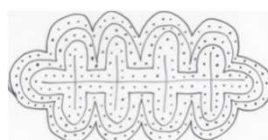
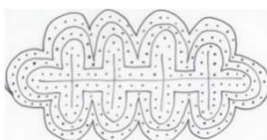
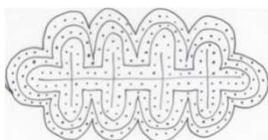
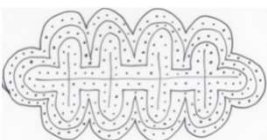


--	--	--

--	--

--	--

Tikami : Molokon atiwano ikako la'a ilonpo imelo ko upinone.



Tukutimi 10

Tikami : U, u, Ƴ, ƣ eneli wa'la lo o'wa ikulipako.

u o g U D ƣ U T Ƴ

Tikami : Elokon atiwano umenko, [u] ita ata.

WALA

palulu

ƣololu

siliko

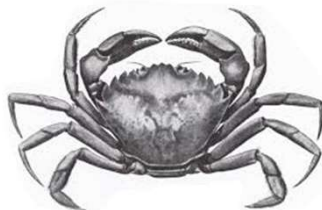
matapi

Alepa

Tikami : Itakako oye [u] etali yako o'wa.



--	--	--



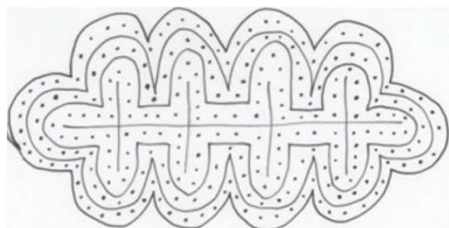
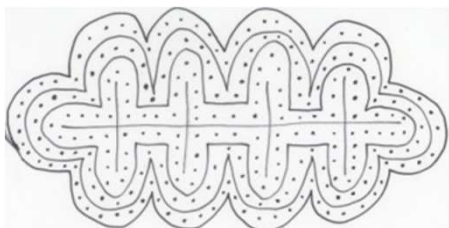
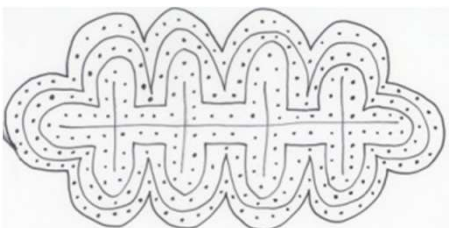
--	--



--	--	--	--

Tikami : Molokon isikiipo [u] ikako la'a.

ƣ ƣ



Tukutimi 10

Tikami : Elokon imelosan ilesimako



Ayepaton

pe'a - oluko
anuwana - mule
mekumenpo



Ulani pe'a po man.
Pomii ali enasan moko
oluko. Tusi anuwana mule
melayan. Mekumenpo
eki me man.



Tikami :
Ekalito oti
wepasamali.

Oye ko Ulani na ?

Noki ko pomii ali enasan ?

Oti meloyan ko tusi ?

Noki ko moko eki me na ?

