

Konopo

Konotamoyan
No'no salame konoposa
Konopo kinitumisa.
Konolekoya
kapu tokine man
Kinitikesan
weiyu konosenepoyan la.
Konopo molo nei

Tukutimi 15

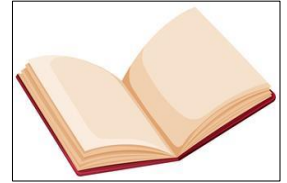
ta - molo -
nei

n N N°



konopo
konopo

Tikami 1 : Elokon ukusan umenko [n] etali yako o'wa.



Tikami 2 : Itakako oye [n] etali yako o'wa.



--	--	--

--	--	--

--	--	--

Tikami 3 : Elokon atiwano isikilimapoko,iyonpo umenko otolo ukupo o'wa.



1 2 3 4 5

1 2 3 4 5

1 2 3 4 5

Tukutimi 15

Tikami 1 : N , n, N̂, n̂ eneli wa'la lo o'wa ikulipako.

N̂	b	e	N	B	B	N	b	N̂
n	o	n̂	G	D	n̂	n	T	O

Tikami 2 : N ,N, n, n, eneli wa'la lo o'wa molokon atiwano ta umenko.

NUNO

nulu

napi

siliko

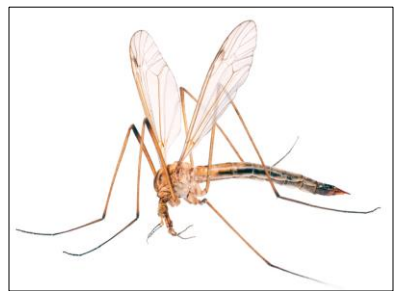
matapi

Nono

Tikami 3 : Elokon atiwano isikilimapo amuko la'a.

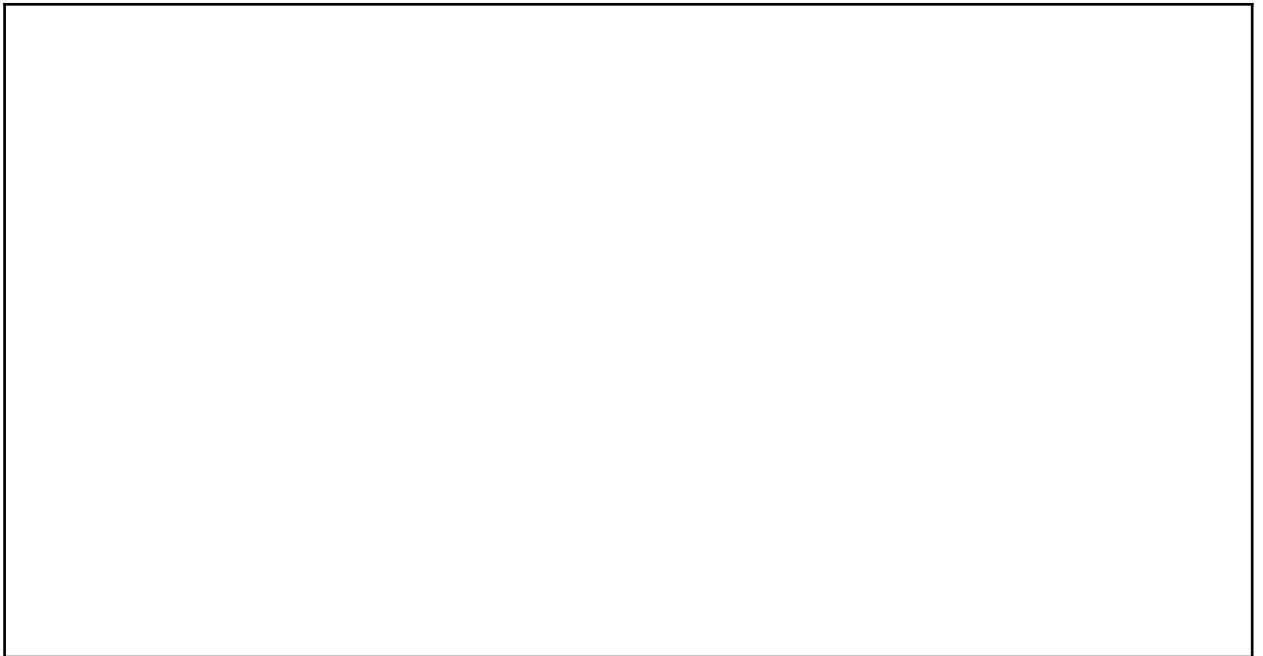
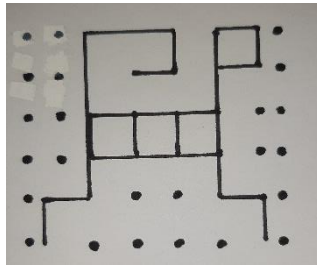


--	--	--



--	--	--	--

Tikami 5 : Sipulu ikako lapa.



Tukutimi 15

Tikami 6 : Elokon isikiipo ikako la'a.

Konopo papome weyu kenepakano la'a .

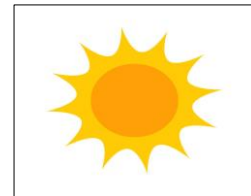
Pitanikon konoisanpaton kulanto.

Ta'ta ko'ki ewuyusan nimoku ta.



Ayepaton

weyu - kulanto -
nimoku



Tikami 7: Ekalito oti wepasamali.

tne wa'la ata ko weyu nepakano?

Oye ko pitanikon naisanpaton ?

—
Noki ewuyusan ko ta'ta nimoku ta?

