

Ta'ta nana poyan
timainali ta

Pa'pa
kenepatoman

Nana se pole
man !

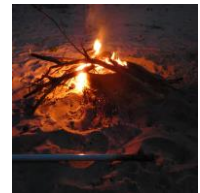
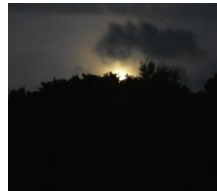
Tukutimi 18

Ta, se,
pole



Pe'a pe'a

Tikami 1 : Elokun ukusan umenko, ['] etali yako o'wa: koko, wa'to, ko'ko, wato.



Tikami 2 : Oye ['] etali yako o'wa molokon ukusan ta itakako.



--	--	--



--	--	--



--	--	--



--	--	--



--	--	--	--	--	--



Tukutimi 18

Tikami 3 : ['] eneli wa'la lo o'wa molokon atiwano ta ikulipako.

Ko'ko

PE'A

Wa'to

Na'na

KOKO

woto



Tukutimi 18

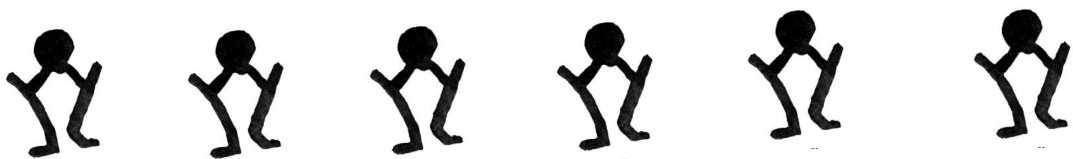
Tikami 4: Molokon atiwano itako la'a iyonpo imeloko upinone.



--	--	--	--



--	--	--	--	--






Tukutimi 18

Tikami 5 : kali'na ikako lapa.

Kali'na



Tukutimi 18

Tikami 6 : Elokun imelosan ilesimako.

Ta'ta konosekeyan elo kokolo.

Pa'pa kusa apiye niton.

Ilawonene ata suwisuwi netai.

Ayepaton

Kokolo

apiye
Ita

ilawonene



Tikami 7 : Ekalito oti wepasamali.

Oto ko ta'ta nayan ?

Oya ko pa'pa niton ?

† ne wa'la ata ko suwisuwi netai?

